

GRANTS AND SUBSIDIES FOR YOUR TRIP ABROAD

MOBILITY GRANTS



To help you carry out such a project, several financial assistance programs facilitate your mobility. The European Commission, the Member States (in France, via the Regional Councils, General Councils and Town Halls) and other organisations may award you grants, subject to eligibility conditions. Mobility grants are grants that allow you to supplement your budget and fulfill your stay abroad.

GENERAL TERMS AND CONDITIONS

- To be registered (You need to be enrolled) at Université Sorbonne Paris Nord during the year of your stay abroad.
- To go abroad with one of our partnership institutions.
- The award of a scholarship is subject to compliance with the eligibility criteria and the limited availability of funds.

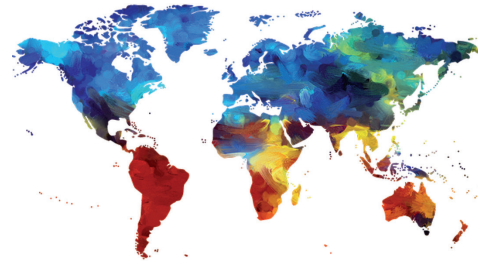
All scholarship applications must be prepared separately and at the same time as the application for an exchange program. Applications should be picked up from and submitted to the International Relations Office of the IG.

www.galilee.univ-paris13.fr

www.sup-galilee.univ-paris13.fr

THE INTERNATIONAL RELATIONS DEPARTMENT OF THE GALILEE INSTITUTE:

A service entirely dedicated to the reception and orientation of students in incoming or outgoing mobility programs.



Going abroad

Who is it for? A Bachelor's or Master's Degree student, or an engineering student at Sup Galilee.

Coming to study at Université Sorbonne Paris Nord

Who can benefit? A Bachelor's or Master's Degree student, or an engineering student attending partner universities or institutions.

WHY CONTACT THE INSTITUT GALILEE INTERNATIONAL RELATIONS OFFICE?

A local service is available for you:

- A welcome desk
- Advice
- Housing orientation, student life
- Assistance in the preparation of mobility projects and funding applications

As part of a mobility project, the International Relations Office of IG supports you in following procedures and helps you complete the necessary formalities to fulfill your project (application form, obtaining a scholarship...)

GENERAL RULES FOR EXCHANGE PROGRAMS:

- The application form is prepared one year before departure. - You must be registered at Université Sorbonne Paris Nord during the year in which the application is submitted and the year of your stay.
- In most cases, you will be exempt from all tuition fees at the host university.
- Your period of study abroad will be counted towards validating your French diploma according to the European Credit Transfer System (ECTS)

The International Relations Office of the IG

Location: Office D211

Opening hours: Monday, Tuesday, Thursday and Friday
from 9am to 12pm and from 1.30pm to 5pm
Wednesday from 9am to 12pm

01 49 40 44 59

relations-internationales.galilee@univ-paris13.fr



THE INTERNATIONAL SPIRIT IS AT THE HEART OF OUR TRAINING COURSES



Institut Galilée attaches great importance to international relations. The internationalisation of its courses is a priority and a major challenge for students. To reach this objective, the IG has developed double-diploma courses with its privileged partners.

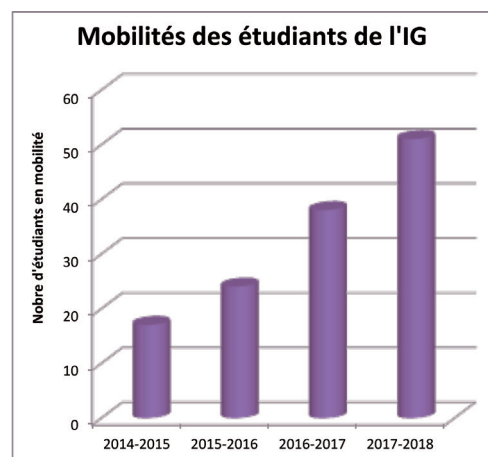
Going abroad is a unique human experience and a tremendous asset for joining the professional world. This is why the Institut Galilée supports its students in their mobility efforts and in the promotion of their experiences.

Testimonials



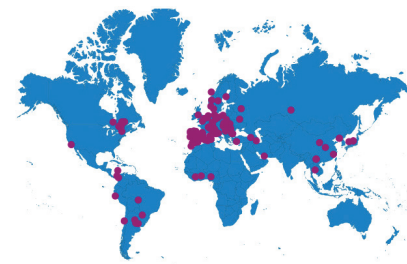
Solenn Claudel Student at the Sup Galilée Engineering School (MACS) :

As part of my international mobility during my third year, I went to Warsaw, which is very affordable. I obtained a mobility grant from the Ministry of Higher Education. Over there, all of the teachers are bilingual. Most of the courses are research-related courses or presentations. For example, we had to give presentations in English in front of student researchers. This allowed me to be very comfortable speaking, which facilitated my contact with companies later.



Number of partners in the world:

- Europe: 86
- Asia: 20
- Middle East and Africa: 15
- Latin America: 9
- North America: 3
- 6 double degrees and 3 off-site training courses



• BILATERAL AGREEMENTS

Université Sorbonne Paris Nord has established: **116 bilateral agreements** with universities around the world (Seoul National University,...)

35 special agreements with IG (University of Montreal, Central National University of Taiwan...).

• FIELDS OF STUDY/DIPLOMAS

BACHELOR's Degree

- Double degree in Mathematics and Computer Science at the University of Campania "Luigi Vanvitelli" in Naples.

MASTER'S Degree

- Mathematics and Computer Data Exploration and Decision Making with the Sidi Mohamed Ben Abdellah University in Fez
- Networks and Imaging Innovation and Engineering with the Ho Chi Minh City Polytechnic Institute

SCHOOL OF HIGHER EDUCATION IN ENGINEERING

- All fields of study with the École Supérieure Privée d'Ingénierie et de Technologie de Tunis
- All fields of study with the Ecole Nationale Supérieure des Mines de Rabat
- Applied Mathematics (MACS) with the Universidad Autonoma de Madrid.

• OFF-SITE TRAINING

Master's degree from the Hanoi University of Science and Technology (USTH):

- Major in Advanced Materials Science and Nano-Technology
 - Major in Information and Communication Technology (ICT)
- Franco-Vietnamese Master's in Applied Mathematics from the University of Sciences of Ho Chi Minh City.**

• EXCHANGE PROGRAMS

The IG participates in many cooperative programmes such as:

- **ERASMUS +:** the European Union programme for education, training, young people and sports allows students to spend a semester at one of Université Sorbonne Paris Nord's partner institutions located in Europe.
- **MICEFA :** The Mission Interuniversitaire de Coordination des Echanges Franco-Américains association promotes cultural and scientific cooperation between France and American Universities. They work with these Universities and their students to facilitate the exchange of students and the promotion of education abroad.
- **BCI:** The Bureau de Coopération Inter-universitaire is a Franco-Quebec program that allows students to spend a semester or a year in a partner university in Quebec.

ON THE INTERNATIONAL SCENE

Going abroad: above all is an invitation to explore other cultures, other lifestyles and other teaching methods. Also the IG and the Sup Galilée Engineering School prepare you to gain international experience in the surroundings of your training.

ENGLISH, A PASSPORT TO INTERNATIONAL DESTINATIONS?

English level certifications are required by some programs and organizations. To participate in an exchange under the MICEFA program (United States) for example, a score of 80 points on the TOEFL is required.

TOEFL

The TOEFL (Test of English as a Foreign Language) is an internationally recognised English language test which assesses your written and oral level. It is recognized by more than 8,500 higher education institutions in more than 130 countries (American, Canadian, English universities, etc.) or grandes écoles for the admission of foreign students. The Espace Langues of Université Sorbonne Paris Nord in Villetaneuse offers 40 hours of TOEFL preparation in the first semester and 18 hours in the second semester.

To register for TOEFL certification go to www.fr.toefl.eu

TOEIC

(The Test of English for International Communication) evaluates your use of the English language in professional situations. More than 14,000 companies and government agencies use this evaluation tool in more than 150 countries. The Institut Galilée is an official Toeic testing center.

- The engineering students of the Sup Galilée School are prepared for this test throughout their English training at the school and can participate in one of the 3 annual sessions by making a formal request.
- Students of the Institut Galilée also have the opportunity to take the TOEIC test at the Maison des Langues de Paris Descartes at the special rate of €70.
- All interested students can benefit from a free 30-hour online self-study module and tutored support from a teacher. Students who wish to take the TOEIC individually also have the opportunity to register directly with ETS Global.